

B070N1 SOFTMATIC AUTOMATIC DIGITAL RING AND BALL APPARATUS



STANDARDS: EN 1427 | ASTM D36 | AASHTO T53 | NF T66-008;
comparable to: BS 2000 | DIN 52011 | UNE 7111
UNI 4161 | CNR N.35

This high technology digital microprocessor tester, designed and manufactured by Matest, automatically determines the softening point of asphalts and pitches.

Two laser sensors detect the balls fall determining the softening point.

The bath temperature is measured by an electronic system maintaining the gradient (5 °C/min) as specified by the Standards.

A magnetic stirrer with electronic speed adjustment from 0 to 160 rpm also ensures a uniform temperature in the vessel during the test execution.

The cooling system enables to quickly cool down the samples, allowing to perform many more tests per day.

The **touch-screen** graphical interface allows an easy set up of the parameters and the immediate execution of the test. High resolution color display, 1/4 VGA, offers all the functions of a PC for the management and analysis of data, test results, and graphs.

Two test parameters can be selected in the microprocessor menu:
- test on boiled distilled water for softening point from 30 to 80 °C.
- test on glycerol for softening point from 80 up to 150 °C.

Language selection: English, French, Spanish, German, Italian, Polish, Russian, Greek, Portuguese and Dutch.

Available functions: clock calendar, test number, user/customer name, general notes, start/end of the test.

Real time visualisation of the bath temperature, test progress, rpm of the stirrer.

The tester is basically composed of:

- Ceramic-glass heating plate with automatic cut off at the end of the test cycle.
- Motherboard with microprocessor, which controls: heater/stirrer, temperature probe, laser sensors, pre-heating phase of the plate, and memorizes all the test parameters.
- Steel balls centering device.

Power supply: 230V 1ph 50-60Hz 700W

Dimensions: 500x350xh550 mm

Weight: 20 kg approx.

ACCESSORY

B070-11

RODS WITH SPHERICAL ENDS (set of 2 pieces)
for checking and calibration of the instrument.

SPARES

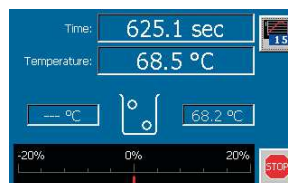
- B072-03** Steel ball 9.5 mm diameter
- B070-15** Brass tapered ring, chromed
- B070-16** Brass centering guide, chromed
- B070-17** Pyrex beaker



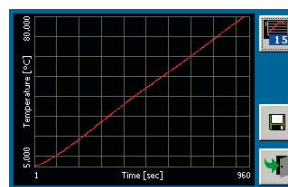
B070N1

MAIN FEATURES

- Real time display of the Temperature (°C)-Time(sec) graph along the entire test.
- Touch-Screen display like a normal PC.
- Unlimited memory (USB pendrive, SD card) editable data via PC.
- Multilanguage selection.
- Microprocessor friendly-driven menu to control all the test phases.
- Top quality components: laser sensors, electronic magnetic stirrer, ceramic-glass heating plate.
- Fully automatic.



Test execution



Temperature-Time graph



B070-11

B070-16

B070-17

B072-03

B070-15